

Project Documentation | EKTSDG-010101 Target Simulator Doppler Generator

Project Number:

SMS Project Number:

Project Title:

Handheld Radar Target Simulator Doppler Generator

Keyword(s):

Electronic Radar Target Simulator

Doppler Generator

K-Band

Date:

November 24, 2017

Document:

EKTSDG-010101 Electronic K-band Target Simulator Doppler Generator Data Sheet.doc

Document state:

In progress

Ready for review

X Released

Outdated

PROPRIETARY

The information contained in this document may be subject to change without notice.

The information contained in this document shall remain the sole exclusive property of s.m.s smart microwave sensors GmbH.

1 Data Sheet

The EKTSDG-010101 (Elektronic K-band Target Simulator/ Doppler Generator) is a battery powered handheld portable moving target simulator for K-band (24GHz) Radar sensors.

It can be used for:

- Alignment of sensors in the field at installation time
- Field or lab calibration and year-by-year inspection
- General functional testing in the field and in the lab

This device was specifically developed to work with Smartmicro 24GHz sensors. It is capable to simulate a moving target in static distances up to 100m and can for instance be placed close to a stop line of an intersection to check the alignment of one or multiple radar sensors.

A software generated modulation signal allows generation of low distortion and directional Doppler signals from 44Hz to 13,4kHz corresponding to any speeds from 1km/h to 300km/h.

1.1 Features

- Handheld K-Band Target Simulator Doppler Generator
- Programmable Speed Interval 1 ... 300km/h
- Programmable Movement Direction
- Programmable Signal Level
- Programmable Presets
- Rechargeable Accumulator
- Standalone or Hosted Operation
- USB Interface to Hostcomputer
- Compact and Rugged Construction
- EKTSDG-Remote PC Software included

1.2 Applications

- Mobile Test Equipments
- Production Final Inspection
- Incoming Components Inspection
- System Tuning and Adjustment

PROPRIETARY

The information contained in this document may be subject to change without notice.

The information contained in this document shall remain the sole exclusive property of s.m.s smart microwave sensors GmbH.

1.3 Device Photograph

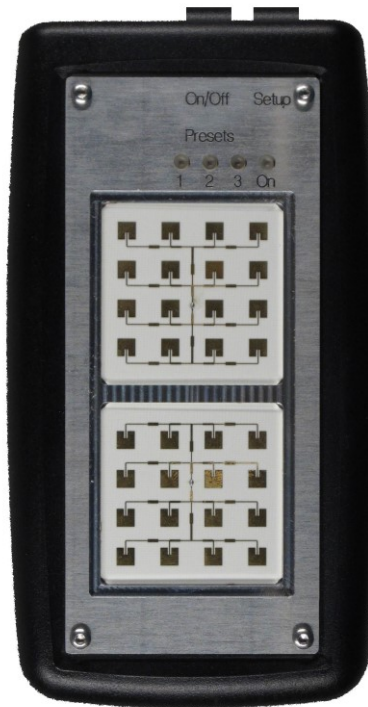


Figure 1: EKTSDG-010100

1.4 Configuration Software

The EKTSDG may be connected via USB to any Windows PC. The included Configuration Software allows real time remote controlling and configuring the presets of the EKTSDG.

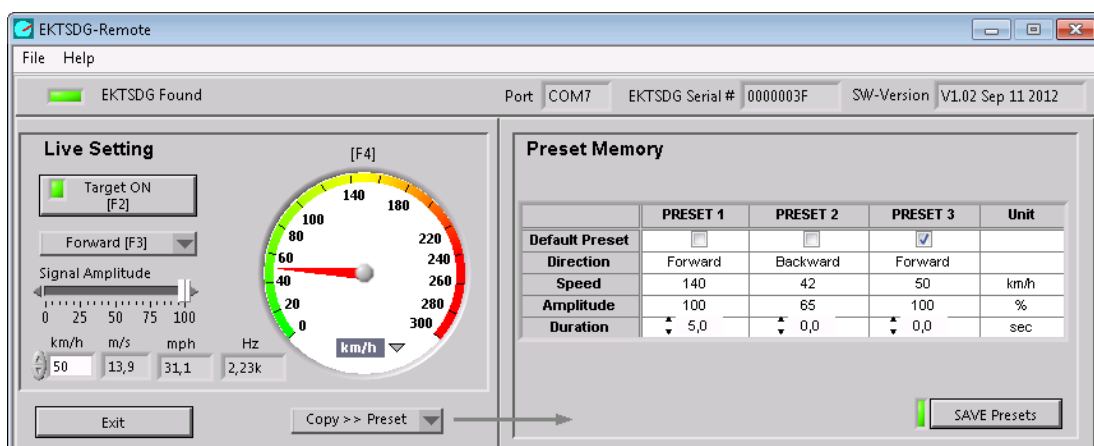


Figure 2: Configuration Software.

PROPRIETARY

The information contained in this document may be subject to change without notice.

The information contained in this document shall remain the sole exclusive property of s.m.s smart microwave sensors GmbH.

1.5 EKTSDG-010101 Characteristics

Parameter	Conditions / Notes	Symbol	Min	Typ	Max	Unit
Operating conditions						
Supply voltage	Battery	V_{ccBatt}	3.5	3.7	4.1	V
	USB	V_{ccUSB}	4.5	5	5.5	V
External Supply current	Operating	I_{cc1}		200	500	mA
	Charging	I_{cc2}		450	500	mA
Battery Capacity	T=25°C	C_{LiPo}		1500		mAh
Battery Lifetime	Full charging cycles	-		500		Cycles
Operating temperature	non condensing	T_{op}	0		+60	°C
Storage temperature		T_{st}	-20		+80	°C
Doppler Simulator						
Frequency range	Transmit frequency	f_{TG}	24.000		24.250	GHz
Doppler frequency range	Digitally adjustable	$f_{Doppler}$	44		14300	Hz
Simulated speed range	Digitally adjustable	$v_{Doppler}$	1		300	km/h
Output power range	Adjustable signal level	P_{out}	1		100	%
Antenna gain	F=24.125GHz	G_{Ant}		15		dBi
Antenna polarization	Linear, vertical			V		
Horizontal -3dB beamwidth	E-Plane	W_{ϕ}		24		°
Vertical -3dB beamwidth	H-Plane	W_{θ}		27		°
Sidelobe level	E- and H-Plane	D			-15	dB
Overall gain	For linear polarized transceivers			65		dB
Aequivalent reflectivity	For linear polarized transceivers	RCS_{jin}		25		m ²
Frequency error Dopplersignal	Crystal controlled	$\Delta f_{doppler}$			1	%
Max. drift in overall gain					+/- 3	dB
Harmonics in generated Doppler ¹	$f_{doppler} = 1\text{kHz}$	$H_{Doppler}$			-10	dBc
Harmonics in RF Spectrum	$F_{RF} = 24.125\text{GHz}$	H_{RF}			-30	dBm
Max. radiated Power	EIRP	P_{sat}		20		dBm
Host Interface						
USB	Serial USB, Mini-USB connector					
Body						
Outline Dimensions				68x128x24		mm x mm x mm
Weight	Including LiPo Battery			180		g
Accessories						
Protection case, Softcase, USB Cable, Windows Software "EKTSDG-Remote" as Download						

¹ Above ~200km/h simulated speed, the harmonics level in generated Doppler will degrade.

PROPRIETARY

The information contained in this document may be subject to change without notice.

The information contained in this document shall remain the sole exclusive property of s.m.s smart microwave sensors GmbH.

2 Important Legal Disclaimer Notice

All Product, Product specifications and data in this project documentation are subject to change without notice to improve reliability, function, design or otherwise.

The statements, technical information and recommendations contained herein are believed to be accurate as of the date hereof. Smartmicro disclaims any and all liability for any errors, inaccuracies or incompleteness contained in this datasheet or in any other disclosure relating to the Product.

To the extent permitted by applicable law, Smartmicro disclaims (i) any and all liability arising out of the application or use of the Product or the data contained herein, (ii) any and all liability of damages exceeding direct damages, including - without limitation – indirect, consequential or incidental damages, and (iii) any and all implied warranties, including warranties of suitability of the Product for a particular purpose.

Statements regarding the suitability of Products for certain types of applications are based on Smartmicro' knowledge of typical requirements that are often placed on Smartmicro' Products in generic/general applications. Such statements are, however, not binding statements about the suitability of Products for a particular/specific application. It is the customer/user's own responsibility to validate that the Product with the specifications described herein is suitable for use in its particular/specific application. Parameters and performance of the Products may due to particular/specific applications and due to particular/specific surroundings deviate from the statements made herein. Therefore, it is important that customer/user has thoroughly tested the Products and has understood the performance and the limitations of the Products before installing the Products for the final applications or before commercialization. Although Products are well optimized to be used for the intended applications stated herein, it must also be understood by the customer/user that the detection probability may not be 100 % and the false alarm rate may not be zero.

The information provided herein, relates only to the specific Product designated and may not be applicable when such Product is used in combination with other materials or in any process not defined herein. All operating parameters, including typical parameters, must be validated for each customer application by the customer/user's technical experts. Customers using or selling Smartmicro products not expressly indicated for use in such applications do so at their own risk.

This Product specification or data sheet does not expand or otherwise modify Smartmicro terms and conditions of purchase, including but not limited to the warranty expressed therein.

Except as expressly indicated in writing by Smartmicro, the Products are not designed for use in medical, life-saving, or life-sustaining applications or for any other application in which the failure of the Product could result in personal injury or death.

No license, express or implied, by estoppel or otherwise, to any intellectual property rights is granted by this document or by any conduct of Smartmicro Product names and markings noted herein may be trademarks of their respective owners.

Please note that the application of the Product may be subject to standards or other regulations that may vary from country to country. Smartmicro does not guarantee that the use of Products in the applications described herein will comply with such regulations in any country. It is the customer/user's responsibility to ensure that the use and incorporation of Products complies with the regulatory requirements of their markets.

If any provision of this Disclaimer is, or is found to be, void or unenforceable under applicable law, that will not affect the validity or enforceability of the other provisions of this Disclaimer.

PROPRIETARY

The information contained in this document may be subject to change without notice.

The information contained in this document shall remain the sole exclusive property of s.m.s smart microwave sensors GmbH.

3 Contact

Address:

smart microwave sensors GmbH
In den Waashainen 1
38108 Braunschweig
Germany

Phone / Fax numbers:

Phone: +49-531-39023-0
Fax: +49-531-39023-599

Web / Email address:

Web: www.smartmicro.de
Email: info@smartmicro.de

PROPRIETARY

The information contained in this document may be subject to change without notice.

The information contained in this document shall remain the sole exclusive property of s.m.s smart microwave sensors GmbH.