

## Project Documentation | UMRR Automotive Sensor Data Sheet

---

**Project Number:**

**SMS Project Number:**

**Project Title:**  
Automotive Sensor

**Keyword(s):**  
UMRR Automotive Sensor Data Sheet

**Date:**  
August 29, 2016

**Document:**  
UMRR Automotive Type 43 Data Sheet.doc

**PROPRIETARY**

The information contained in this document may be subject to change without notice.

The information contained in this document shall remain the sole exclusive property of s.m.s smart microwave sensors GmbH.

## 1 Sensor Data Sheet

Smartmicro offers a family of automotive Radar sensors called UMRR – Universal Medium Range Radar.

A number of different antennas are available - so the permanent fixed field of view and max. range can be selected by the customer.

This data sheet describes the type 43 antenna model (all model specific values are highlighted).

Type 43 Antenna aims at long range with very wide horizontal angular coverage.

### 1.1 Sensor Photograph

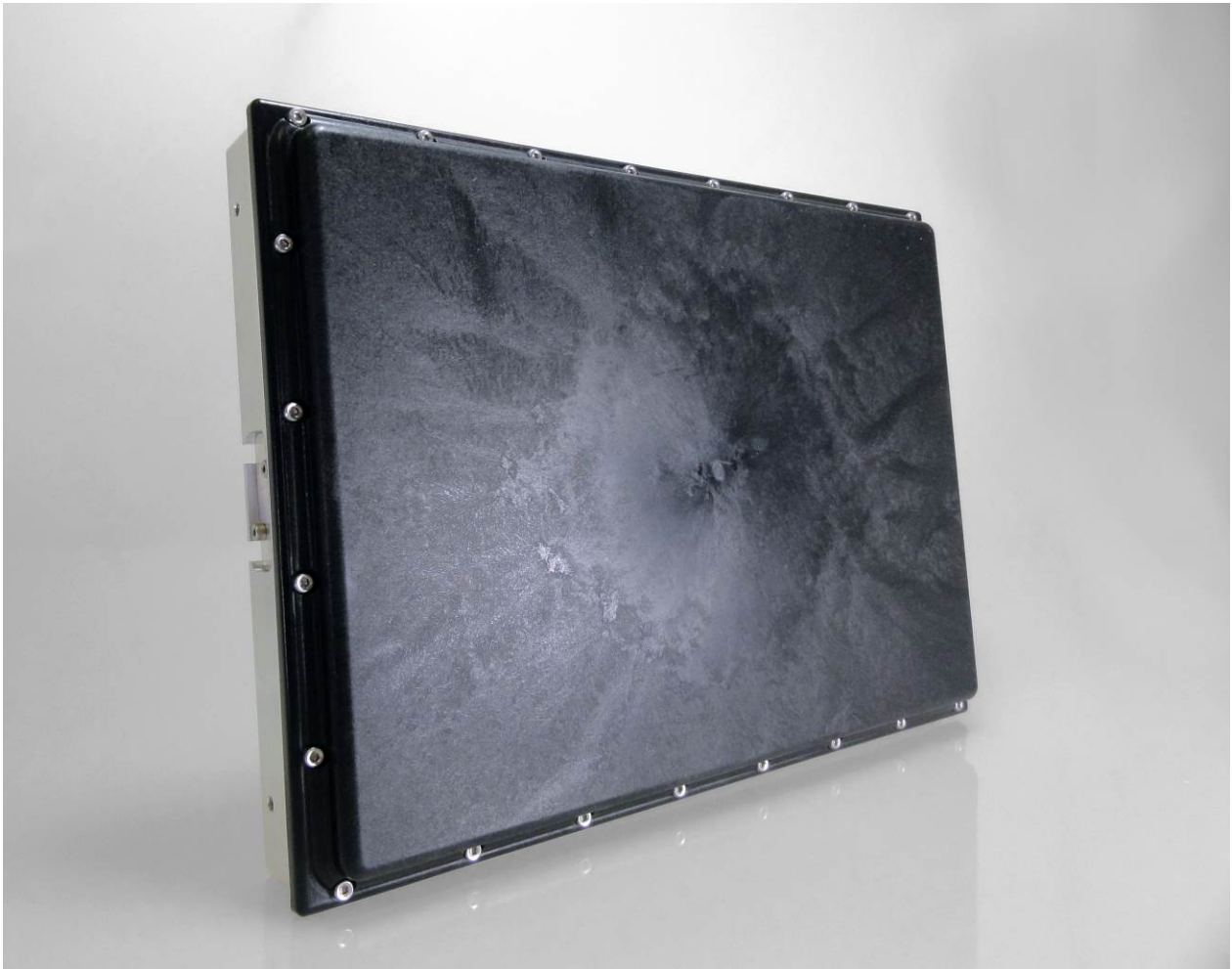


Figure 1: Automotive Sensor **Type 43** - front.

#### PROPRIETARY

The information contained in this document may be subject to change without notice.

The information contained in this document shall remain the sole exclusive property of s.m.s smart microwave sensors GmbH.



Figure 2: Automotive sensor **type 43** - rear.

**PROPRIETARY**

The information contained in this document may be subject to change without notice.

The information contained in this document shall remain the sole exclusive property of s.m.s smart microwave sensors GmbH.

## 1.2 Function Description

The sensor is a robust 24GHz Radar for automotive applications.

It works in adverse conditions, almost unaffected by weather, and independent of sunlight, in a wide temperature interval.

The customer can select from a number of antenna and housing models which determine the permanent fixed field of view and range. **Type 43 Antenna aims at long range with very wide horizontal angular coverage, very high sensitivity.**

One individual sensor measures range, radial speed, az. and el. angle, reflectivity and other parameters of multiple stationary and moving reflectors (**targets**) simultaneously. The following **4D detection** principle is integrated:

- a) Direct Doppler measurement (including Doppler = 0)
- b) Direct Range measurement
- c) Direct Azimuth Angle measurement
- d) **Direct Elevation Angle measurement**

Having multi target capability, the sensor can **detect** many reflectors at a time (**up to 256**) being within the field of view. Azimuth angular measurement is accomplished using digital beam forming (DBF). Elevation angle measurement is accomplished in a similar manner.

Additionally filter algorithms are implemented for the tracking of all detected reflectors over time, those tracking algorithms are integrated in the sensor. **Multiple objects (max. 256)** are tracked simultaneously.

Hence the sensor reports such a list of all tracked objects inside its field of view in every measurement cycle of typ. 40-60ms length (depending on configuration).

**The sensor is also capable of detecting stationary reflectors and objects with relative speed = 0.** Stationary reflectors are processed in a stationary target grip (STG) which automatically builds a map of the radar's stationary environment whilst driving or when stopped. In this way, road-, building- or other vehicle's 2D structures or shapes can be mapped.

Note: In practice, especially at long ranges, stationary clutter (unwanted infrastructure reflectors) may not always be distinguishable from automotive reflectors, i.e. stopped vehicles.

### PROPRIETARY

The information contained in this document may be subject to change without notice.

The information contained in this document shall remain the sole exclusive property of s.m.s smart microwave sensors GmbH.

### 1.3 Object Separation Performance

The sensor measures object co-ordinates of multiple objects simultaneously in **4D**, i.e. range speed and az. and el. angle, or x, y, z and speed vector. However, what counts even more is the object separation capability where many vehicles are closely spaced, i.e. in multi-lane scenarios with dense traffic, like traffic jams, stop-and-go traffic and busy intersections

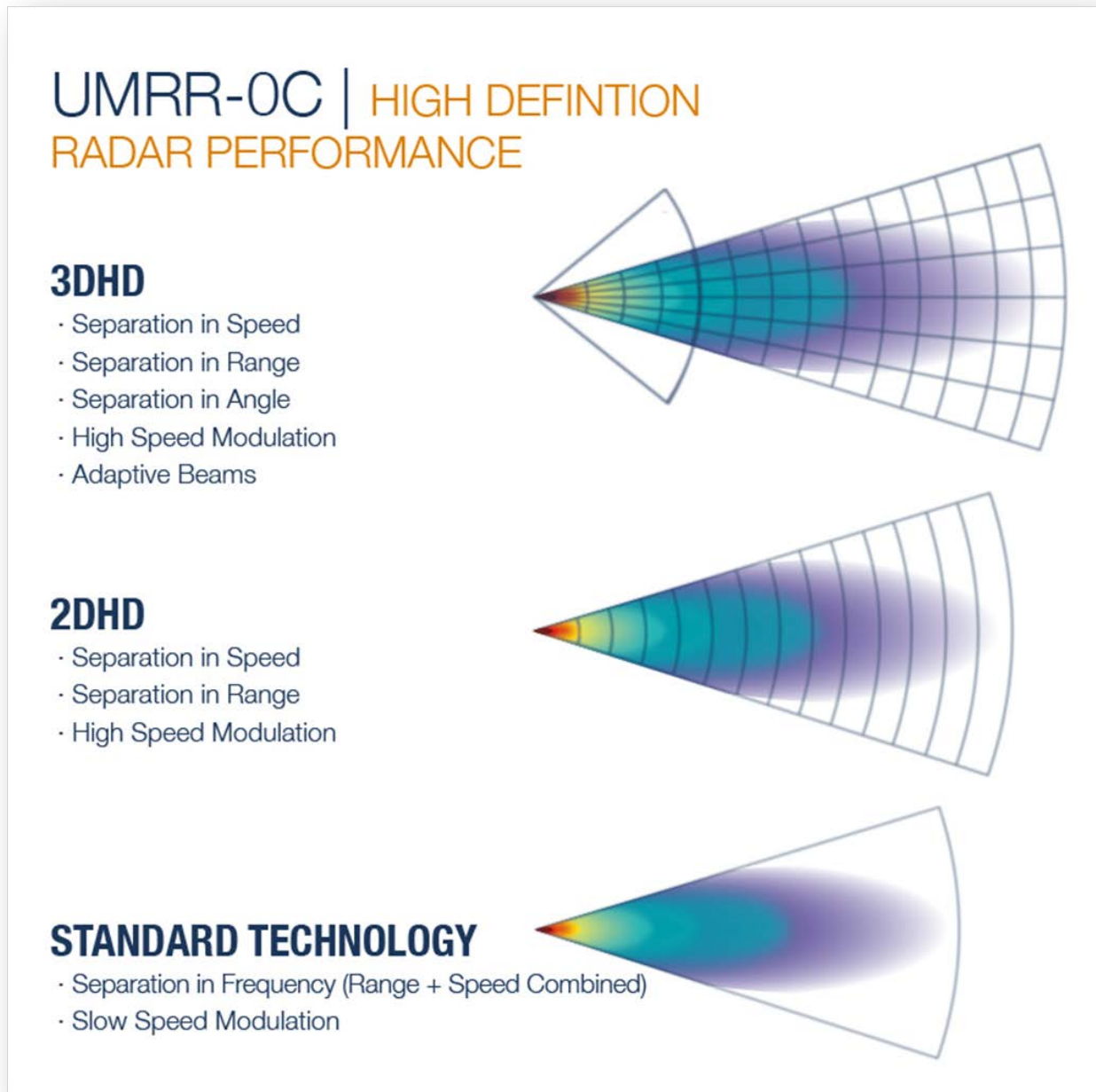


Figure 3: Object Separation Capability.

PROPRIETARY

The information contained in this document may be subject to change without notice.

The information contained in this document shall remain the sole exclusive property of s.m.s smart microwave sensors GmbH.

UMRR-0C **Type 43** features a technology called **3DHD**. For each reflector, UMRR-0C can accomplish range gate specific and az. angular gate (beam) specific detection of moving and stationary vehicles. In each of these gates a separate Doppler detection is accomplished. Figure 3 explains the principle.

**The sensor provides excellent target/object separation capabilities (3DHD).**

Individual reflectors are separated in the detection algorithms by:

- a) having a different radial speed value **OR**
- b) having a different range value **OR**
- c) by having a different azimuth angular position.

Nominal separation values (meaning bin to bin distance or beam to beam distance):

**speed: 0.13m/s, range: 1m, azimuth angle: 3.8°.**

Notes:

This configuration: 150MHz freq. sweep, 60ms cycle time. Real separation values are typically factor 1.0-2.0 x nominal values, if no super resolution algorithms are applied. Tracking algorithms, STG, super resolution and other algorithms further support the practical separation of objects.

**PROPRIETARY**

**The information contained in this document may be subject to change without notice.**

The information contained in this document shall remain the sole exclusive property of s.m.s smart microwave sensors GmbH.

## 1.4 Antenna Characteristics

### 1.4.1 Beam Pattern

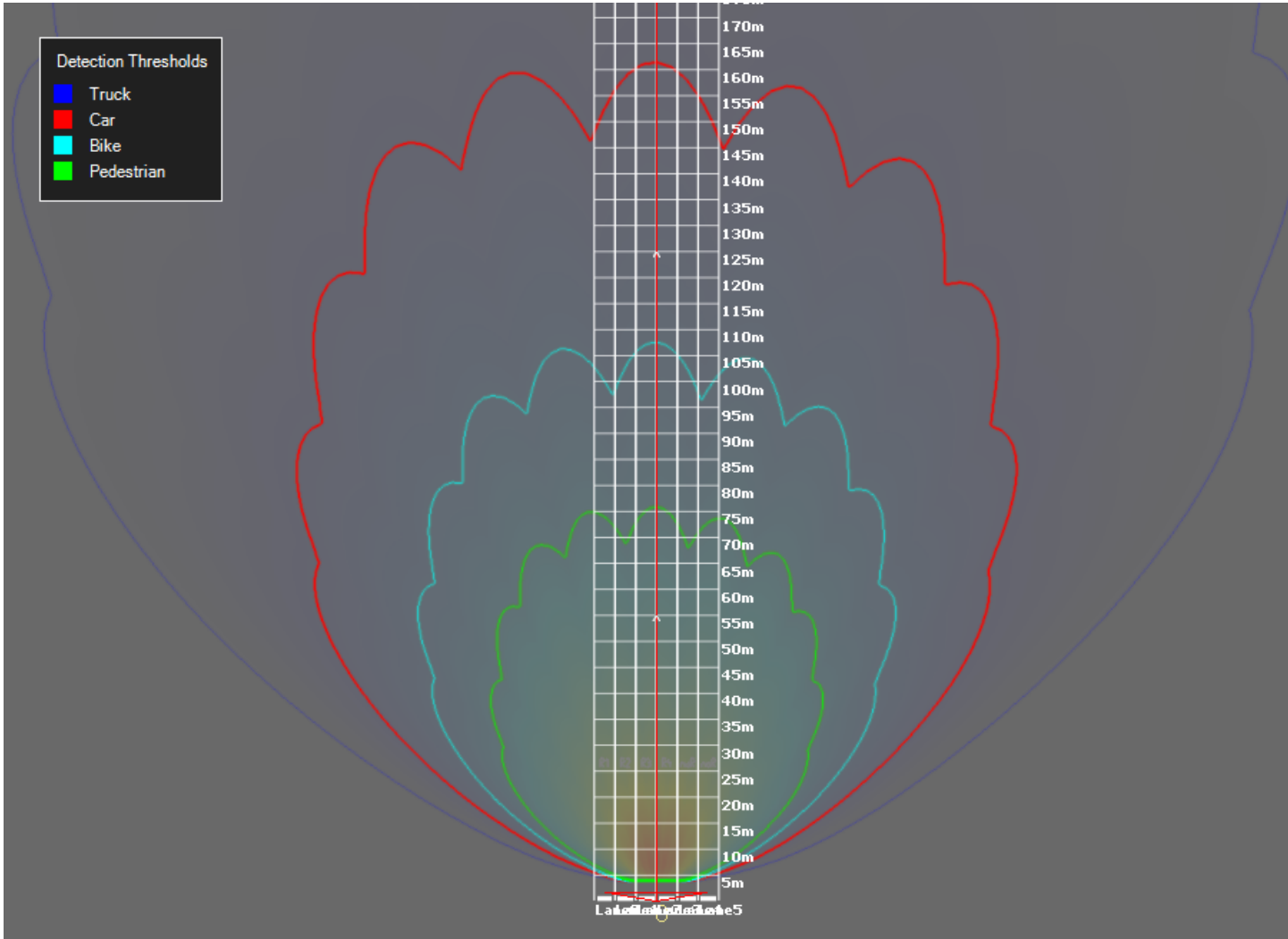


Figure 4: Beam Pattern Type 43, Range values given for 12.7dBm EIRP

**PROPRIETARY**

The information contained in this document may be subject to change without notice.

The information contained in this document shall remain the sole exclusive property of s.m.s smart microwave sensors GmbH.

## 1.5 Data Interfaces

### 1.5.1 Target List

Having multi target capability, the sensor will **detect** many reflectors at a time (**up to 256**) being within the field of view. Depending on the selected communication interface, the number of **reported** targets may be limited to 128. Targets are sorted by range and if more than 128 are detected, short range targets are reported first. Target list interface is unfiltered, uncorrelated, model-free and reported every cycle.

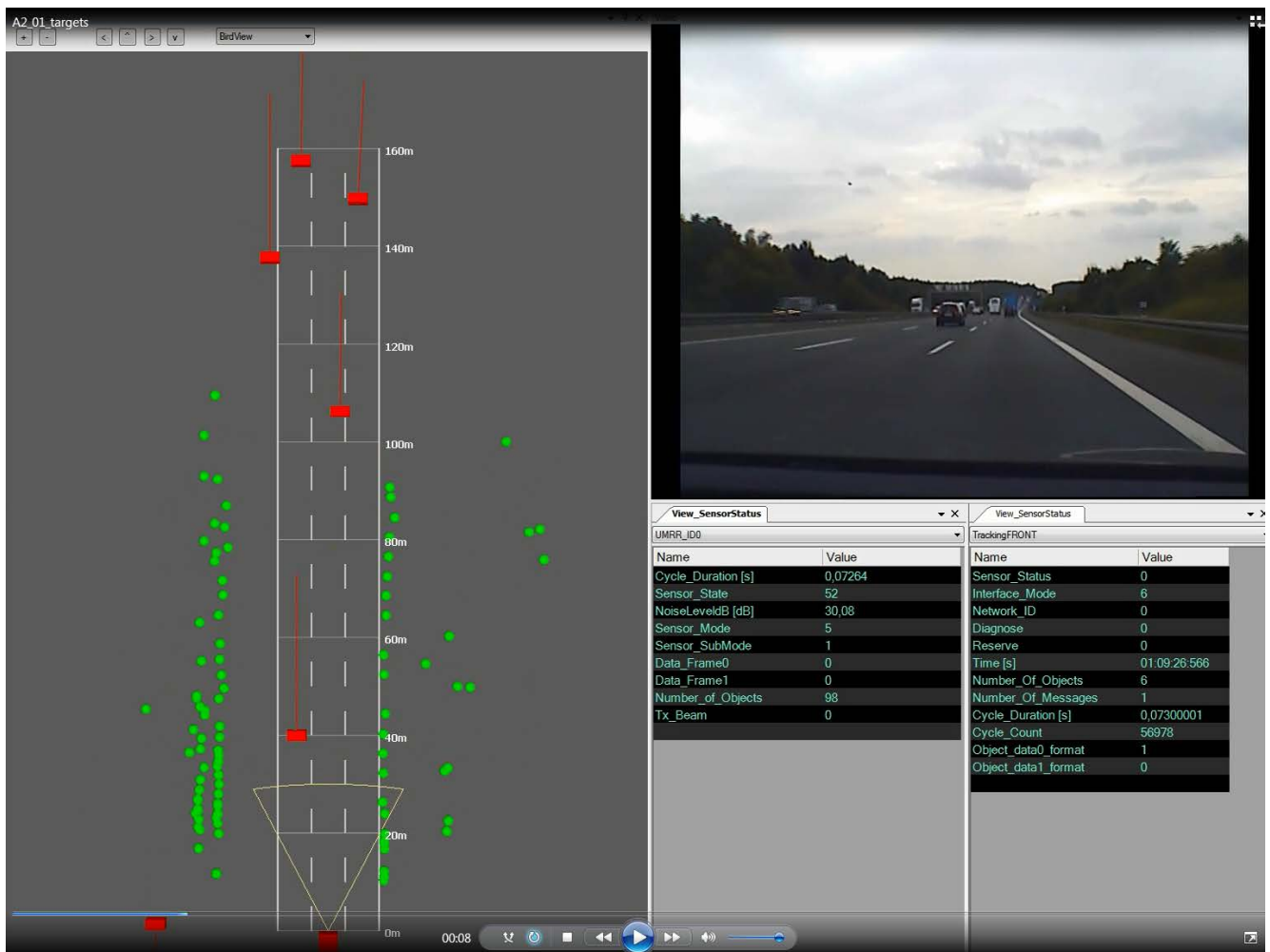


Figure 5: Target (green) and Object (red) Visualization

PROPRIETARY

The information contained in this document may be subject to change without notice.

The information contained in this document shall remain the sole exclusive property of s.m.s smart microwave sensors GmbH.



### 1.5.2 Object List

Filter algorithms are implemented for the tracking of all detected reflectors over time, those tracking algorithms are integrated in the sensor. **Multiple objects (max. 256)** are tracked simultaneously. Depending on the selected communication interface, the number of reported objects may be limited to 126. Objects are sorted by range and if more than 126 are tracked, short range objects are reported first.

The result of the tracking is an **object** list with the following parameters:

- x position
- y position
- z position
- x component of the velocity
- y component of the velocity, other...

### 1.5.3 Stationary Target Grid (STG)

Stationary reflectors are processed in a **stationary target grid (STG)** which automatically builds a map of the radar's stationary environment whilst driving or when stopped. In this way, road-, building- or other vehicle's 2D structures or shapes can be mapped. This interface is available in real-time via Ethernet interface only.

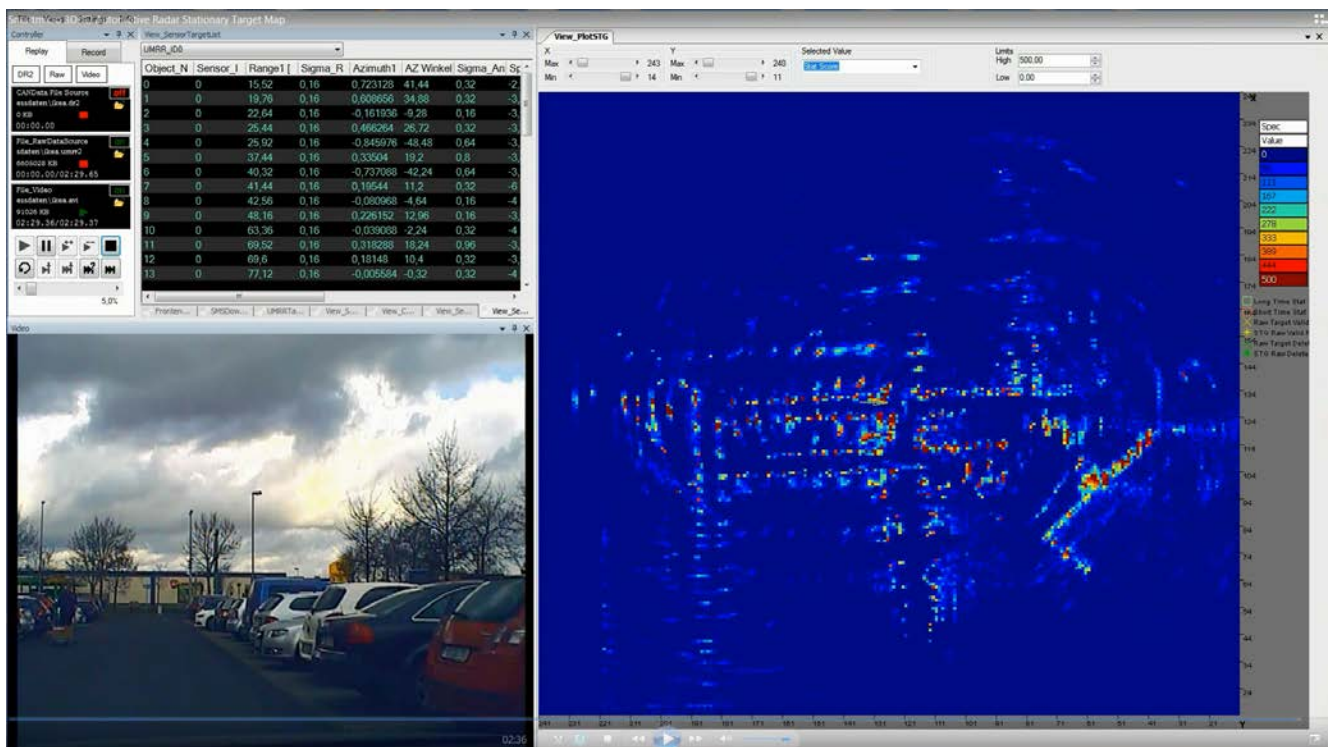


Figure 6: Stationary Target Grid Visualization

#### PROPRIETARY

The information contained in this document may be subject to change without notice.

The information contained in this document shall remain the sole exclusive property of s.m.s smart microwave sensors GmbH.

## 1.6 General Performance Data

Parameter	Value	Unit
<b>Sensor Performance</b>		
Max. Range on Passenger Car	280 <sup>I</sup> (@20dBm) / 180 <sup>I</sup> (@12.7dBm)	m
Max. Range on Truck	330 <sup>I</sup> (@20dBm) / 290 <sup>I</sup> (@12.7dBm)	m
Instrumented Range	330	m
Minimum Range	1.5	m
Range accuracy	Typ. < ±2.5% or < ±0.25m (bigger of)	%, m
Radial Speed Interval	-68.3 ... +68.3 (±88.8 available)	m/s
Minimum abs. Radial Speed	0.1	m/s
Speed accuracy	Typ. < ±0.28 or ±1% (bigger of) <sup>II</sup>	m/s
Angle Interval (total field of view)	-8 ... +8 (El.); -50 ... +50 (Az.) <sup>III</sup>	degree
Update time	≤ 79	ms
<b>Environmental</b>		
Ambient Temperature	-40 ... +74	degree C
Shock	100	grms
Vibration	14	grms
IP	67 <sup>IV</sup>	
Pressure / Transport altitude	0...10.000	m
<b>Mechanical</b>		
Weight	1290	g
Dimensions	See 1.9	
<b>Model No.</b>		
DSP Board – Antenna Identification	0Cxxxx-2Bxxxx	
Housing Identification	0707xx	
<b>General</b>		
Power Supply	13 ... 32 <sup>V</sup> 12 <sup>VI</sup>	V DC W
Frequency Band	24.0...24.25	GHz
Bandwidth	< 250	MHz
Max. Transmit Power (EIRP)	<20 (<12.7 for certain regions)	dBm
Interfaces	CAN V2.0b (passive) <sup>VII, VIII</sup> RS485 full duplex <sup>VII, VIII</sup> 10/100 Ethernet <sup>VII</sup>	
Connector	12 Pin plug Hirose LF10WBRB-12PD	CAN, Power, RS485, Eth.

<sup>I</sup> Typical values; may vary to higher or lower values depending on clutter environment. All values given for bore sight. Please note that the Radar system – like any other sensor system – although being well optimized and providing excellent performance, will not achieve a 100% detection probability and will not achieve a false alarm rate equal to zero.

<sup>II</sup> Measured on object having const. radial speed, at bore sight.

<sup>III</sup> Total field of view is angle interval where reflectors can be detected; 3dB field of view is narrower.

### PROPRIETARY

The information contained in this document may be subject to change without notice.

The information contained in this document shall remain the sole exclusive property of s.m.s smart microwave sensors GmbH.

<sup>IV</sup> IP 67 only when connector or cap attached.

<sup>V</sup> measured at connector; min. voltage slew rate 500V/s or max. voltage rise time 15ms; supply source impedance 0.5Ohms.

<sup>VI</sup> Power consumption at 20°C. Power consumption varies with temperatures: 10W ... 17.5W at +74°C

<sup>VII</sup> It is recommended to use an external surge protection for power, CAN, RS485, Ethernet and other interface ports.

<sup>VIII</sup> RS485 and CAN have limited bandwidth and may not be able to provide all data interfaces to full extent.

### 1.6.1 Start-up time

After power up or reset, the sensor readings are within specified performance within < 1 second(s).

### 1.6.2 On-board diagnostics (BIT)

The UMRR sensor cyclically reports a status message providing the following information (Continuous BIT)

- Sensor run time
- Sensor cycle time
- Sensor mode
- Other status bits

Initiated BIT is available. Sensor will send BIT results when it receives a command to do so.

### 1.6.3 Sensor Network

The sensor is typically used standalone.

### 1.6.4 Real Time Clock and Storage

The sensor has a real time clock on board.

### 1.6.5 Attitude Sensor, Gyro, Digital Compass.

The sensor has a 3-axes attitude Sensor, 3-axes gyro and digital compass on board.

### 1.6.6 Compliance

ETSI EN 300-440, FCC part 15, RSS-310, RSS-210, SRRC, KCC, NCC  
CE  
ROHS

Note:

Parts of the UMRR-OC device may be hot. To ensure protection against accidental contact and fire protection, operate this device only with observe safety instructions according EN 60 950-1, corresponding UL Standard or national safety regulation.

**PROPRIETARY**

**The information contained in this document may be subject to change without notice.**

The information contained in this document shall remain the sole exclusive property of s.m.s smart microwave sensors GmbH.

## **1.7 Physical Interfaces**

### 1.7.1 Ethernet

10/100Mbit/s

### 1.7.2 CAN Bus

Can V2.0b

500kBit/s standard baud rate.

### 1.7.3 RS485

Full Duplex Operation

115kBit/s standard baud rate.

**PROPRIETARY**

**The information contained in this document may be subject to change without notice.**

The information contained in this document shall remain the sole exclusive property of s.m.s smart microwave sensors GmbH.

## 1.8 Sensor Description and Hardware ID

Every UMRR sensor housing is tagged with a type sticker containing the product description and the serial number. It also contains a mark which side of the sensor is top.

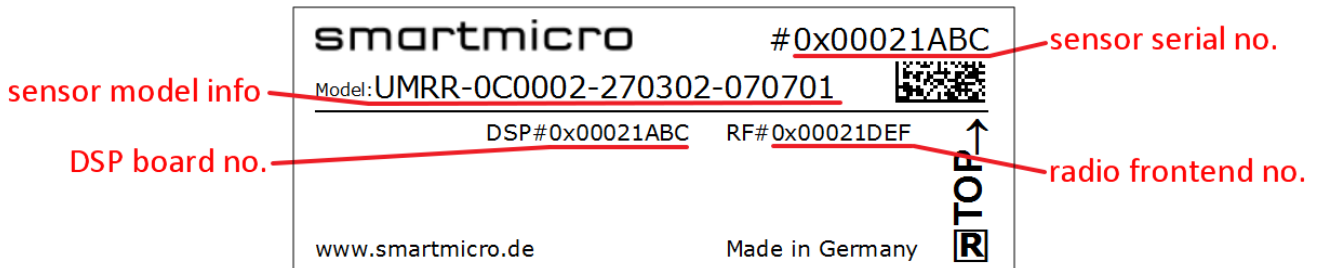


Figure 7: Type sticker example

The individual sensors are referred to as **UMRR-xyyyzz-aabbcc-ddeeff**

- xx (DSP Board Generation xx)
- yy (DSP Board Derivative/Version yy)
- zz (DSP Board Revision zz)
  
- aa (RF Board (Antenna) aa)
- bb (RF Board Derivative/Version bb)
- cc (RF Board Revision cc)
  
- dd (Housing type dd)
- ee (Housing Version ee)
- ff (Housing Revision ff)

UMRR means Universal Medium Range Radar platform developed by Smartmicro.

The number in the top right corner is the unique serial number of the sensor. In addition to that the used DSP board and the RF board got their own unique serial numbers.

### PROPRIETARY

The information contained in this document may be subject to change without notice.

The information contained in this document shall remain the sole exclusive property of s.m.s smart microwave sensors GmbH.

## 1.9 Sensor Dimensions

All values given in mm.

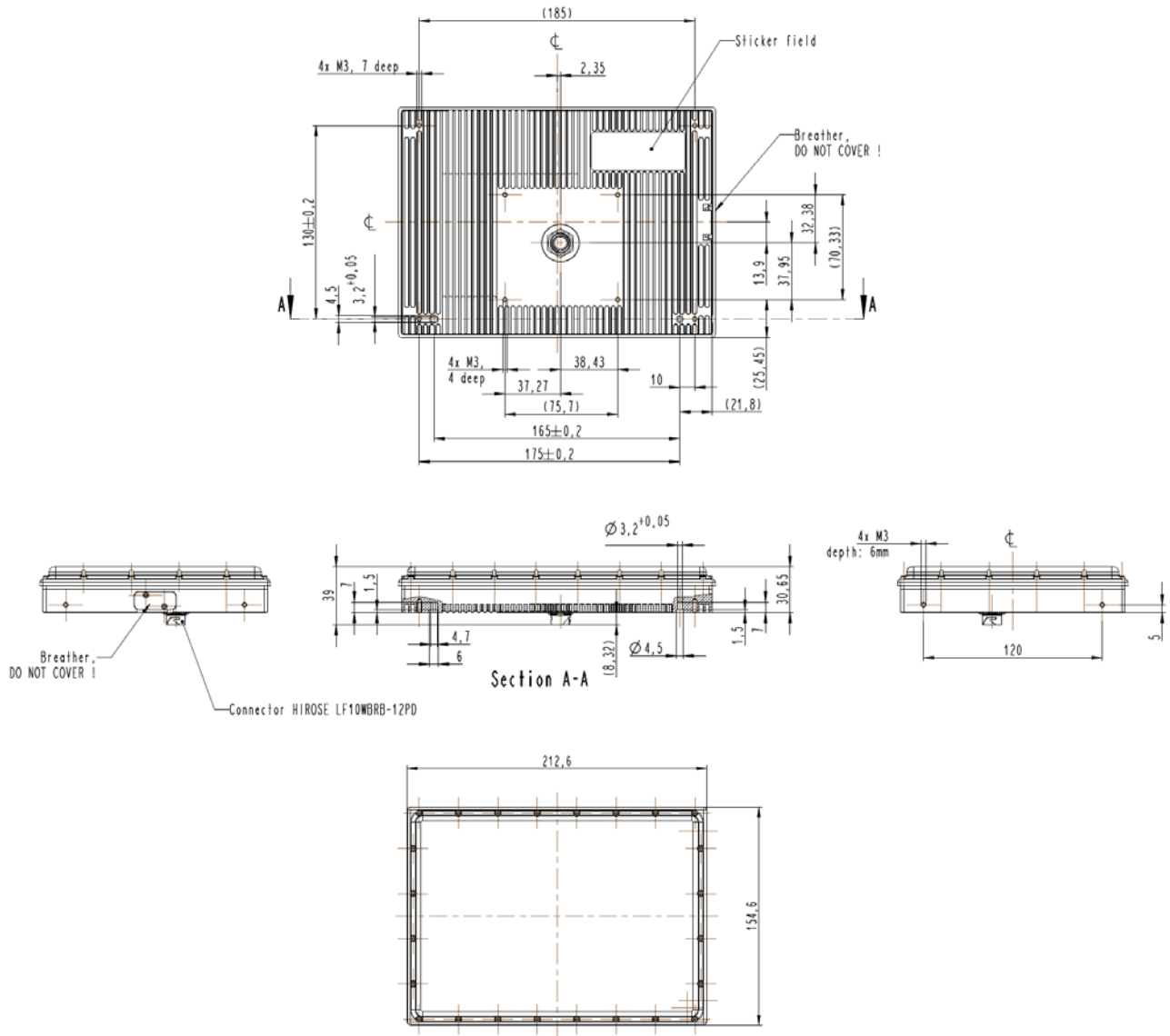


Figure 8: Sensor Dimensions.

PROPRIETARY

The information contained in this document may be subject to change without notice.

The information contained in this document shall remain the sole exclusive property of s.m.s smart microwave sensors GmbH.

## 1.10 Connector

The used sensor connector is a 12-pin male (plug) circular bayonet type connector (water proof IP67, series LF10WBRB-12PD, manufacturer Hirose, Japan). A female counterpart (socket), e.g. LF10WBP-12S, has to be used to connect to the sensor. The pin numbering of the socket is shown in Figure 9 the pin description is given in Table 1.

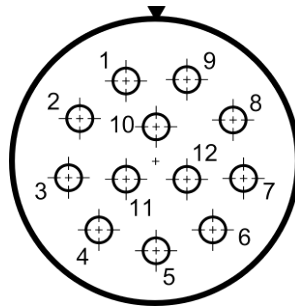


Figure 9: View on solder cup side of socket (rear view of female counterpart to be connected to sensor)

Table 1: Sensor connector pin out model UMRR-0Cxxxx

Pin No.	Function	Wire Color (MEDI type #KU110C12J002)
1	Sensor Ethernet TX H	gray / red
2	Sensor Ethernet TX L	red / blue
3	Sensor RS485 RX L	pink
4	Sensor RS485 RX H	gray
5	Sensor RS485 TX L	brown
6	Sensor RS485 TX H	white
7	Sensor_GND	blue
8	Sensor_Vcc	red
9	Sensor Ethernet RX L	black
10	Sensor Ethernet RX H	purple
11	CAN H	green
12	CAN L	yellow

Please note that in the standard configuration the sensor has no 120 Ohms resistor on board (CAN bus termination between CAN L and CAN H). The resistors are nevertheless required at either end of a CAN / RS485 bus and are in most cases integrated in the cable delivered along with the sensor (if cable is manufactured by Smartmicro).

For the RS485 data interface there is a 120 Ohms resistor on board of the sensor.

A number of cable sets for initial operation and test purposes are offered by Smartmicro, to deliver a fast set-up of a sensor system. Among those preconfigured ready-to-run cables as well as cable stumps (pig tail cables or various lengths) which carry the connector on one side and open wires on the other.

### PROPRIETARY

The information contained in this document may be subject to change without notice.

The information contained in this document shall remain the sole exclusive property of s.m.s smart microwave sensors GmbH.

## 2 Important Legal Disclaimer Notice

All Product, Product specifications and data in this Product / project documentation or data sheet are subject to change without notice to improve reliability, function, design or otherwise.

Not all Products and/or Product features may be available in all countries and regions. For legal reasons, features may be deleted from Products or Smartmicro may refuse to offer Products.

The statements, technical information and recommendations contained herein are believed to be accurate as of the date hereof. Smartmicro disclaims any and all liability for any errors, inaccuracies or incompleteness contained in this datasheet or in any other disclosure relating to the Product.

To the extent permitted by applicable law, Smartmicro disclaims (i) any and all liability arising out of the application or use of the Product or the data contained herein, (ii) any and all liability of damages exceeding direct damages, including - without limitation - indirect, consequential or incidental damages, and (iii) any and all implied warranties, including warranties of suitability of the Product for a particular purpose.

Statements regarding the suitability of Products for certain types of applications are based on Smartmicro' knowledge of typical requirements that are often placed on Smartmicro' Products in generic/general applications. Such statements are, however, not binding statements about the suitability of Products for a particular/specific application. It is the customer/user's own responsibility to validate that the Product with the specifications described herein is suitable for use in its particular/specific application. Parameters and performance of the Products may due to particular/specific applications and due to particular/specific surroundings deviate from the statements made herein. Therefore, it is important that customer/user has thoroughly tested the Products and has understood the performance and the limitations of the Products before installing the Products for the final applications or before commercialization. Although Products are well optimized to be used for the intended applications stated herein, it must also be understood by the customer/user that the detection probability may not be 100 % and the false alarm rate may not be zero.

The information provided herein, relates only to the specific Product designated and may not be applicable when such Product is used in combination with other materials or in any process not defined herein. All operating parameters, including typical parameters, must be validated for each customer application by the customer/user's technical experts. Customers using or selling Smartmicro products not expressly indicated for use in such applications do so at their own risk.

This Product specification or data sheet does not expand or otherwise modify Smartmicro terms and conditions of purchase, including but not limited to the warranty expressed therein. Except as expressly indicated in writing by Smartmicro, the Products are not designed for use in medical, life-saving, or life-sustaining applications or for any other application in which the failure of the Product could result in personal injury or death.

No license, express or implied, by estoppel or otherwise, to any intellectual property rights is granted by this document or by any conduct of Smartmicro Product names and markings noted herein may be trademarks of their respective owners.

Please note that the application of the Product may be subject to standards or other regulations that may vary from country to country. Smartmicro does not guarantee that the use of Products in the applications described herein will comply with such regulations in any country. It is the customer/user's responsibility to ensure that the use and incorporation of Products complies with the regulatory requirements of their markets.

If any provision of this Disclaimer is, or is found to be, void or unenforceable under applicable law, that will not affect the validity or enforceability of the other provisions of this Disclaimer.

### **PROPRIETARY**

**The information contained in this document may be subject to change without notice.**

The information contained in this document shall remain the sole exclusive property of s.m.s smart microwave sensors GmbH.



### 3 Contact

**Address:**

smart microwave sensors GmbH  
In den Waashainen 1  
38108 Braunschweig  
Germany

**Phone / Fax numbers:**

Phone: +49-531-39023-0  
Fax: +49-531-39023-599

**Web / Email address:**

Web: [www.smartmicro.de](http://www.smartmicro.de)  
Email: [info@smartmicro.de](mailto:info@smartmicro.de)

**PROPRIETARY**

The information contained in this document may be subject to change without notice.

The information contained in this document shall remain the sole exclusive property of s.m.s smart microwave sensors GmbH.